



Annual Report 2022

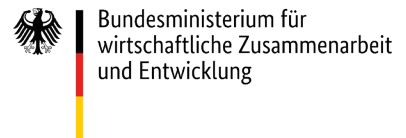


Elevating
the interconnection
between access
to information
and improved
land governance

Land Portal is grateful for
the generous support of **our donors**:



giz Deutsche Gesellschaft
für Internationale
Zusammenarbeit (GIZ) GmbH



Bundesministerium für
wirtschaftliche Zusammenarbeit
und Entwicklung



german
cooperation
DEUTSCHE ZUSAMMENARBEIT



FORD
FOUNDATION



Netherlands Enterprise Agency

Contents



Message from the Chair of the Board	6
Letter from the Team Leader	7
Inform	9
Country and thematic insights	10
Data stories	11
SDG Land Tracker	11
Open	13
Tracking the State of Land Information globally	14
Transforming the landscape for land governance data	14
A baseline of land data openness around the world	15
Debate	16
Land Dialogues: the centrality of indigenous and community land rights in advancing global efforts to halt the climate crisis	18
Whose Land? Inclusive pathways to land governance	18
Showcasing the donor pledge to advance Indigenous Peoples' and Local Communities' tenure rights	19
Land Portal people	20
In numbers	22

Message from the Chair of the Board

The Land Portal Foundation experienced another successful year in 2022. We achieved substantial progress towards our organizational strategy and monitoring and evaluation framework. Our annual survey results were overwhelmingly positive, with 87% of Land Portal users acknowledging a positive impact on their work. Additionally, the Land Portal remains a highly visited site for land-related information, with an average of 74,000 monthly visits.

To better serve our user base, the Land Portal Foundation is continuously refining its strategy and expanding the range of information products and services offered. This includes hosting webinars with partner organizations, increasing the number of country profiles, and supporting the Global Donor Working Group on Land to keep their donor map up-to-date.

The Foundation has established itself as a leading advocate for open land data, an area of growing importance for the organization. Our initiatives, including the State of Land Information, the Open Up Guide on land governance, and a global indicator on the accessibility of land information, provide opportunities to drive change at a national level.

As the Land Portal Foundation's impact continues to grow, we remain committed to using technology platforms that enable sustainable delivery of our products and services. With a promising future ahead, I am optimistic about the positive impact the organization will continue to make.

Tim Fella,
Chair, on behalf of the board

Letter from the Team Leader

Dear all,

There is a growing recognition of the crucial role that accessible land information and data plays in securing land rights. Governments, communities, and other stakeholders understand the interconnection between land tenure, climate change, food security, urban development, and land degradation, and the need for accurate information to make informed decisions and promote social justice.

In 2022, the Land Portal Foundation took a major step towards creating a more open and democratic information ecosystem globally. The co-launch of the Land Module indicator with the Global Data Barometer in May was significant progress in tracking and measuring the accessibility and availability of land data in more than 100 countries. We conducted in-depth assessments of the state of land information in five specific countries, and through the implementation of the Open Up Guide for Land Governance, are working with governments in Senegal and Madagascar to publish land-related data to support citizen engagement, decision-making, and innovation.

Our annual survey consistently highlights that the country portfolios published on the Land Portal are the most valued information we provide. This year, we expanded our coverage to 68 countries in Africa, Asia, Latin America, and Oceania. Most of these portfolios are published in English, French, Portuguese, and Spanish, reflecting our commitment to inclusivity and providing access to essential information for practitioners, researchers, and policy makers seeking to understand land governance globally.

Over the past few years, the Land Portal Foundation has established itself as a leading convener of large-scale webinars on important topics such as indigenous and community land rights, women's land rights, responsible land investments, the Voluntary Guidelines on the Governance of Tenure, and more. With the support of key organizations in the land sector, we are elevating these issues on the global stage and exploring their relationship with land information systems.

Thank you to all of our partners, donors, and users for your continued support and belief in our work. Our achievements in 2022 are the result of a collective effort.

Best regards,

A handwritten signature in black ink, appearing to read 'Laura Meggiolaro', with a stylized flourish at the end.

*Laura Meggiolaro,
Team Leader*

PILLAR 1

Inform

Much of the world's land governance data and information remains closed or costly to access, fragmented and poorly organized. In response, the Land Portal seeks to improve the documentation, mapping and monitoring of land governance issues through a widely used platform that provides data, structured information, tools and services. In 2022, we developed numerous original knowledge products, significantly increased the number of country portfolios, expanded and improved thematic information, and made these resources available in multiple languages.

Country and thematic insights

Our **Country and Thematic Insights initiative** seeks to deepen understanding of land governance in countries around the world and of critical land governance issues. We do this through comprehensive country and thematic portfolios that describe key issues, challenges, and opportunities for improving land governance.

In 2022, we expanded the number of country portfolios to 68, covering countries in Africa, Asia, Latin America and Oceania. These portfolios have also been published in French, Portuguese and Spanish, extending their reach to non-English speakers as part of our commitment to inclusivity. Each country portfolio includes a detailed narrative written by a team of land experts, providing essential information for practitioners, researchers and policymakers seeking to understand the context of land governance in the country.

Our comprehensive collection of **thematic portfolios** covers a wide range of key land governance issues, facilitating understanding of the importance of land issues to other development areas, while also serving as a gateway to publications, news, blogs, events, and development projects related to the specific land issue. In 2022, we updated the Land & Gender and Land & Climate Change portfolios and developed a new portfolio on Land Degradation & Tenure.

Complementing this work, our **What to Read Digests** provide an overview of the latest and most relevant publications, initiatives and videos on a particular land issue, distilling key messages and points of debate and offering entry points for further learning.



Data stories

Land Portal data stories combine compelling narrative with data visualizations and other visual elements. In 2022, our researchers wrote a series of data stories exploring land degradation and tenure security, the Voluntary Guidelines on the Governance of Tenure, land use value chains, the history and impact of mining on communities in South Africa, and the role of indigenous peoples in addressing the climate crisis.

Double dispossession?

A history of land and mining in South Africa's former homelands

Colonial and apartheid land dispossession in South Africa was the most extensive of any country in sub-Saharan Africa. Despite a land reform program initiated after the transition to democracy in 1994, equitable access to land in both urban and rural areas remains an unresolved issue.

Land dispossession is inextricably linked to the history of mining in South Africa. Recent mineral exploitation has focused on impoverished rural areas that were part of the former “homelands”—land set aside for specific ethnic groups during the apartheid era. In these areas, land tenure remains insecure and traditional authorities are empowered to make land deals with outside parties, creating the possibility of double dispossession, where poor and vulnerable rural households are again displaced by mining activities.

This Land Portal data story seeks to connect the past with the present and unfold the story of double dispossession in South Africa.

11

SDG Land Tracker

Land is a key economic resource that is inextricably linked to access to, use of, and control over other natural resources, and is therefore critical to achieving the Sustainable Development Goals (SDGs). Seven years after the launch of the 17 SDGs, we have taken another look at the progress made on land-related SDG indicators. The updated **SDG Land Tracker** features fully revised and updated narratives for 13 land-related indicators, in collaboration with the SDG custodians.

The SDG Land Tracker provides easy access to data and information on the land-related SDG indicators. It includes official data for 10 of the 13 indicators, sourced from the United Nations and custodian agencies and made available as Linked Open Data on the Land Portal. The SDG Land Tracker provides a timeline of important decisions and key events for the land indicators, and aggregates a wide range of blogs, news, events, debates, and library resources specific to each indicator.



PILLAR 2

Open

The Land Portal is building a democratic and open land information ecosystem where all perspectives are visible and weighed, and where data and information can support positive change in land governance. Countless communities, organizations and individuals are working on land governance issues and producing valuable data, information and stories. We are working to strengthen the flow of land governance information from all perspectives and at all levels, based on open data principles.



Tracking the State of Land Information globally

To support a more open and democratic land information ecosystem worldwide, the Land Portal engages stakeholders and supports actions that help information providers and governments make data more open and accessible.

The **State of Land Information (SOLI)** research and reports aim to provide an overview of the openness of publicly available data on key land issues at the country level. The goal of the research is to uncover the many different sources of land data and information, and to help identify concrete data and information gaps in order to establish a baseline for targeted actions to improve the information ecosystem. We completed research for Botswana, Malawi, Namibia, Senegal, and Zambia in 2022.

Transforming the landscape for land governance data

The **Open Up Guide for Land Governance** is a practical resource for governments to publish land-related data to improve data quality, availability, accessibility and use for better citizen engagement, decision-making and innovation. Land governance data includes the data and information that agencies collect as they carry out their core land management functions of land tenure, use, development, and value.

In 2022, we began implementing the Open Up Guide in Madagascar and Senegal in partnership with the Open Data Charter and with support from the German Agency for International Cooperation (GIZ).

A baseline of land data openness around the world

The Land Portal, together with the Data for Development Network and the Latin American Open Data Initiative, launched the Land Module indicator as part of the Global Data Barometer.

The **Global Data Barometer Land Module** is a global index study that helps the land and open data communities identify countries where land data is lacking or can be improved, and also points to positive examples that can be replicated.

The Land Module provides a global benchmark and a set of globally relevant and comparable indicators, focusing on land tenure and land use, and the use of land data to support work on gender and inclusion. The Land Module provides a composite score for all land indicators by country, averaging the scores of all indicators.

“Thanks to the Land Portal’s excellent work in co-producing the Global Data Barometer’s land module, we now have the first-ever global survey of open land data. This module provides a wealth of information that the land community can use to advocate for greater transparency worldwide, in hopes of fostering inclusion and combating corruption.”

Kristen Rose,
Research Associate, Open Government Partnership



PILLAR 3

Debate

In many places around the world, access to land governance information equals power, and stakes can be high for the most vulnerable communities trying to obtain secure land rights. The Land Portal seeks to promote, inform and enrich the global debate and practice of open and transparent land governance information systems, while raising the visibility of national, regional and international partners.

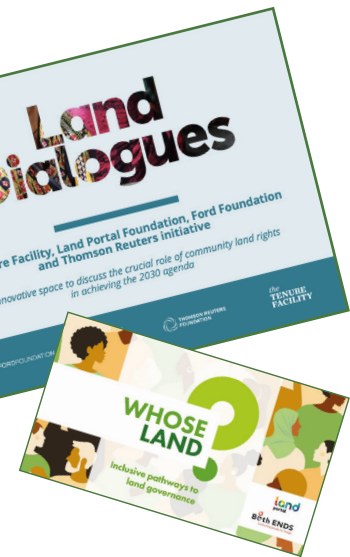
Land Dialogues

The centrality of indigenous and community land rights in advancing global efforts to halt the climate crisis

In 2022, we continued our partnership with the Tenure Facility, the Thomson Reuters Foundation, and the Ford Foundation for the second year to organize a series of **Land Dialogues**. The series aimed at promoting the crucial role of indigenous and community land rights in the global efforts to address the climate crisis, achieve a sustainable planet, and advance the 2030 Agenda for Sustainable Development.

Throughout the year, we hosted four Land Dialogues that delved into various topics, including the legal frameworks supporting tenure rights, the use of data as a source of empowerment, and innovative tools for governance of territories. Our objective was to stir dialogue with and amongst indigenous and local communities concerning their rights and holding decision-makers accountable.

The webinars were conducted in English, French, Portuguese, and Spanish, with each session featuring the voices of Indigenous leaders, who shared their experiences and perspectives.



18

Whose Land?

Inclusive pathways to land governance

The Land Portal Foundation and Both ENDS jointly launched the **Whose Land? Inclusive Pathways to Land Governance webinar series** in 2022. This series aims to provide a platform for stakeholders engaged in land governance to share their insights on the importance of inclusivity and meaningful participation of all relevant actors in both formal and informal land governance processes.

Each webinar in the series explores practical applications of inclusivity through various lenses, including local communities, open data, gender equity, and donor funding. The webinars delve into how inclusivity can be better integrated into the programming and policies of organizations that aim to promote people-centered land governance. Expert moderators led each webinar, featuring diverse voices from around the world. In 2022, three webinars were held as part of the series.

Showcasing the donor pledge to advance Indigenous Peoples' and Local Communities' tenure rights

At COP26, 22 bilateral and philanthropic donors recognized the critical need to increase support for Indigenous Peoples and Local Communities (IPLCs) in tropical forest countries. They made a historic announcement, pledging \$1.7 billion between 2021-2025 to advance forest tenure rights.

This pledge, known as the IPLC Forest Tenure Pledge, is a commitment to mobilize greater and more effective donor support for forest communities. IPLCs and civil society have been calling for an increase in the share of climate finance that supports IPLCs as guardians of forests and nature, and this pledge responds to that demand.

To explain the pledge and track progress towards its implementation, the Forest Tenure Funder's Group asked the Land Portal to host a **dedicated platform**. The platform describes how donors are working in partnership with Indigenous Peoples and local community-led organizations to address shared challenges and make the bigger changes required to increase funding to organizations led by IPLCs.

“Collaborating with the Land Portal over the past year has contributed to creating the required space to enhance focus on the land reform in Sierra Leone. This has thus enriched the discussion and engagement between diverse partners at various levels on responsible investment, protection of customary land rights, elimination of discrimination under the law and protection of the environment in Sierra Leone.”

Buawah Jobo Samba,
Ministry of Lands, Housing and Country Planning, Sierra Leone

“Land Portal Foundation is an integral part of the international land community. Through its knowledge management activities, such as webinars and blog series, as well as the abundance of literature, data, and other resources on its platform, it provides a space for in-depth conversations about land and fosters communication among global land stakeholders, thereby facilitating the making of informed land decisions. Land Portal plays an essential role in my professional life, as it has helped me to expand my understanding of the land space.”

Jennifer Aghaji,
Communication Specialist, Strengthening Capacities for Land Governance in Africa (SLGA), GIZ Office to the African Union



Land Portal People

Our Board of Directors

Tim Fella

Chair - Team Lead, Geospatial Authorities, ESRI

Prof. Jaap Zevenbergen

Treasurer - Full Professor

Department of Urban and Regional Planning
and Geo-Information Management, University of Twente

Dr. Ritu Verma

Anthropologist, International Development
Expert and Civil Engineer

Chris Addison

ICT and knowledge management expert

Dr. Elizabeth Daley

Team Leader of the global WOLTS project
and a Principal Consultant with Mokoro Ltd.

Policy Advisory Group

Chris Penrose Buckley

London, United Kingdom

Ward Anseeuw

Rome, Italy

Harold Liversage

Rome, Italy

Andreas Lange

Eschborn, Germany

Technical Advisory Group

Tim Davies

Portsmouth, United Kingdom

Mike Powell

Alnwick, United Kingdom

Valeria Pesce

Rome, Italy

Marcello De Maria

Advisor - Reading, United Kingdom

Our Team

Luis Baquero

Data Curator

Charl-Thom Bayer

Land Information Management and Advocacy
Consultant

Erik Bennema

Finances Officer

Muhammad Iqbal

Web Developer

Habteab Kesete

Finance and Grant Monitoring Officer

Lilian Lee

Communications Consultant

Laura Meggiolaro

Team Leader

Emeka Okoye

Knowledge Engineer

Silvina Rusinek

Web Manager

Adam Sánchez

Technology Officer

Romy Sato

Local Knowledge Engagement
Network Coordinator

Neil Sorensen

Communications Specialist

Stacey Zammit

Communications Officer

Local Knowledge Engagement Network

Rick de Satgé

Country Research & Engagement Consultant
Cape Town, South Africa

Daniel Hayward

Country Research & Engagement Consultant
Bangkok, Thailand

Anne Hennings

Country Research & Engagement Consultant
Germany, South Africa, Sierra Leone

Nieves Zúñiga

Country Research & Engagement Consultant
Berlin, Germany

Marie Gagné

Country Research & Engagement Consultant
Montreal, Canada

Amanda Martinez

Local Content Associate
Recife, Brazil

Sandra Apaza Lanyi

Local Content Associate
Madrid, Spain

Israel Bionyi

Local Content Associate
Cameroon

Compared to 2021

+20%

1,739,101

page views

+19%

915,277

visits

+1%

66,883

Land Library resources

+10%

10,606

news articles

+7%

8,531

Twitter followers

Compared to 2021

+10%

5,001

users 66% from the Global South

+5%

2,652

likes on Facebook

+3%

2,036

sources of information

+16%

2,004

blog posts

-

61

datasets



LAND PORTAL FOUNDATION
Postbus 716, 9700 AS Groningen,
the Netherlands

www.landportal.org

contact@landportal.org

 www.facebook.com/landportal

 [@landportal](https://twitter.com/landportal)

 www.linkedin.com/company/landportal